

# VERDERAIR

## VA-2H54 SF

The VA-2H54 SF is a hygienic designed electrical or air operated double diaphragm pump. With the wide range of materials for valve seats, ball valves and diaphragms, this pump is the ideal problem solver for numerous hygienic applications. The VA-2H series is used where a high degree of food safety is required. The VA-2H is a reliable, easy to operate pump.



### Your benefits

- Most hygienic design for food applications
- Efficient engineered design which reduces the risk of contamination (low amount of products which come into contact with the medium)
- A high quality product with best price-performance ratio
- Can run against closed discharge valve without the need of overpressure safety equipment
- Dry self-priming

Technical Data			
Weight (kg)	Flapper version	76,2	
Suction lift (mWc)	dry	1,5	
	wet	9,1	
Temperature limits internals (°C)	BUNA-N	-12	82
	FKM *	-40	135
	EPDM	-40	135
	Neoprene	-18	82
	PTFE	4	104
	PTFE overmold diaphragms	4	82
	Santoprene	-40	82
Max. particle size (mm)	Flapper versions	96,5	
Max. viscosity (mPas)		15000	
Fluid displacement/cycle (litres)	Flapper versions	1,5	
Certifications	All models	-	CE / FDA
	Internals diaphragms	EO,TO,TS with TF valves	EN1935/2004
		EO,TS with TF valves	USP class VI
* The maximum temperature listed is based on the ATEX standard for T4 temperature classification. If you are operating in a non-ATEX zone, FKM maximum temperature is 160°C			

# VERDERAIR

## VA-2H54 SF

Code VA-2H54 No.1 No.2 No.3 No.4 No.5 No.6 No.7 No.8

**No. 1 Fluid Section Material**

☒ X = 316 Stainless Steel, Ra : 0,8µm

**No. 2 Air Section Material**

☒ S = 316 Stainless Steel

**No. 3 Check Valve seat material**

SE = SS seat with EPDM o-rings  
 SB = SS seat with Buna-N o-rings  
 ST = SS seat with EP-TF o-rings  
 SV = SS seat with FKM o-rings

**No. 4 Check ball valves material**

☒ FL = SS316 Flapper



**No. 5 Diaphragm material**

BN = BUNA-N  
 ☒ EO = EPDM overmolded  
 SO = Santoprene overmolded  
 SP = Santoprene  
 ☒ TO = PTFE/EPDM overmolded  
 ☒ TS = PTFE/Santoprene 2 piece  
 VT = Viton



**No. 6 Connections**

D1 = DIN 11851, DN100, male  
 T1 = Tri-Clamp (ASME BPE), 4"

**No. 7 Pump Style**

SF = Flapper valve execution

**No. 8 Wetted material certifications**

21 = EN 10204 type 2.1  
 31 = EN 10204 type 3.1

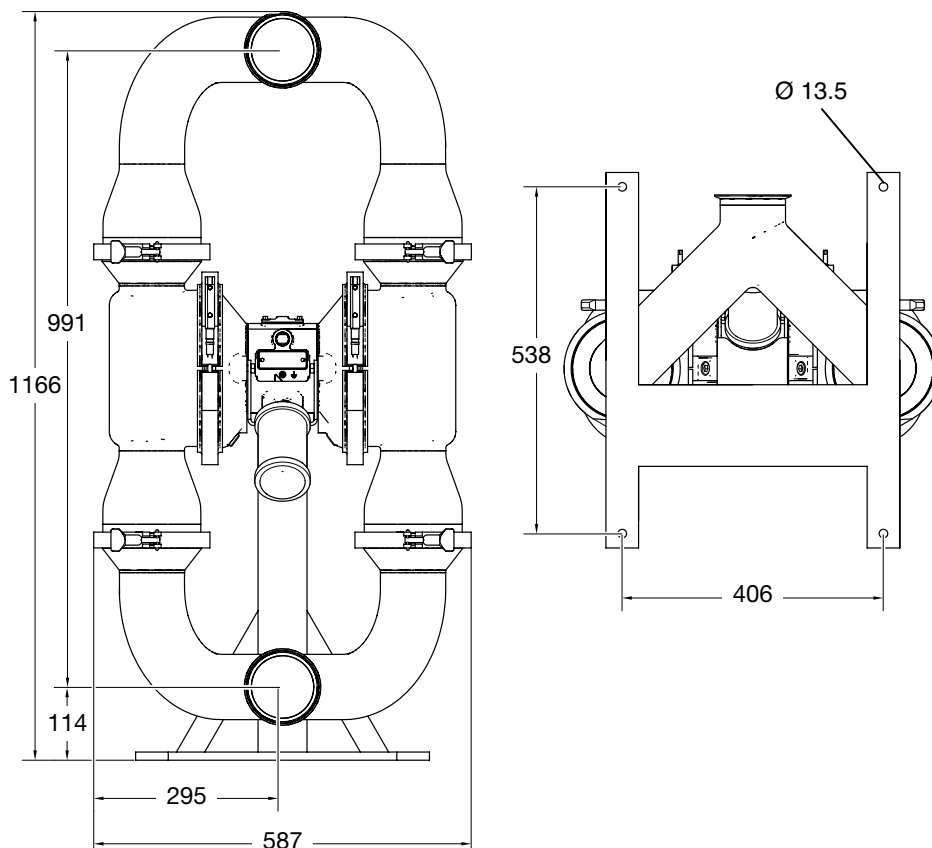
NOTE not all combinations are available

☒ II 2 GD ☒ h IIA T6...T3 Gb X ☒ h IIIB T160°C Db ☒ EN 1935/2004

**EXAMPLE PUMP TYPE**

**VA-2H54XS ST FL TS D1 SF 21**

**Dimensions (mm)**

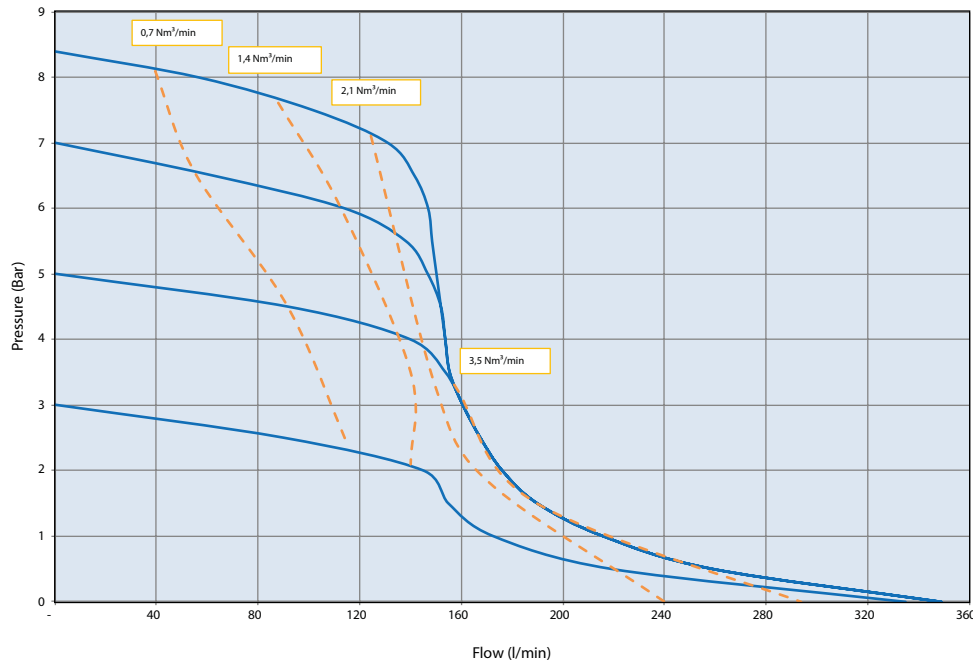


# VERDERAIR

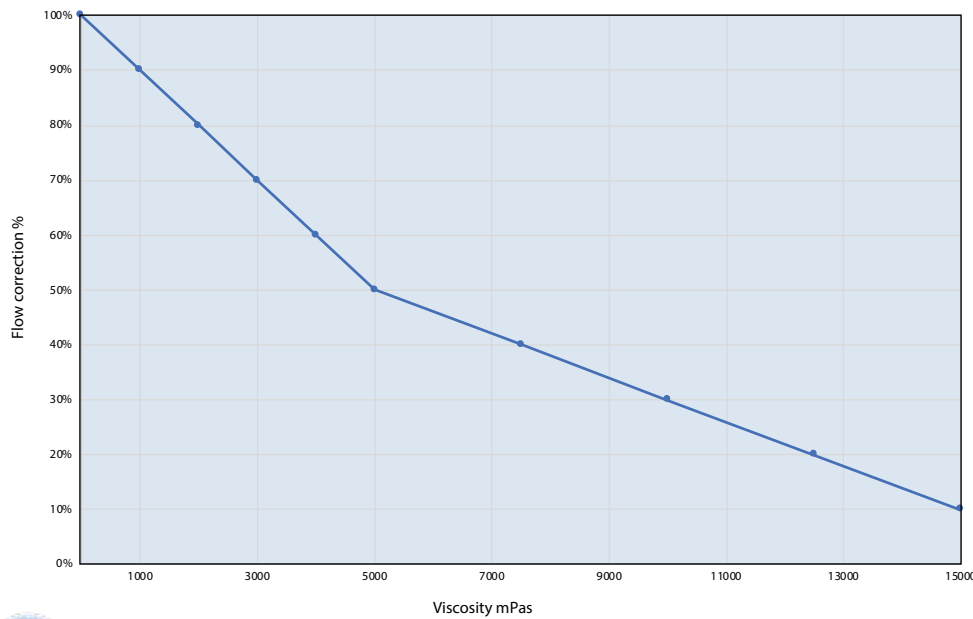
## VA-2H54 SF



### Flow rate / air consumption



### Viscosity correction curve



Datasheet\_VA-2H54\_SF\_EU



Find your local supplier at [www.verderliquids.com](http://www.verderliquids.com)

For construction, installation and floor mounting drawings please contact your local authorised Verderair® distributor.